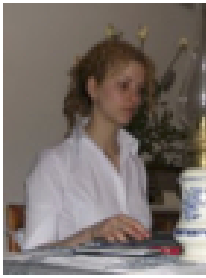


Personal information


Silvia Salini

 DEMM, Via Conservatorio 7, 20122 Milan,, Italy

 silvia.salini@unimi.it

 <http://users.unimi.it/salini/>

Gender Female | **Date of birth** 12/11/1976 | **Nationality(-ies)** Italian

WORK EXPERIENCE

from 2015

Associate Professor in Statistics

University of Milan

Teaching and Research in Statistics. Teaching has concerned courses at graduate, post graduate and PhD level in Italian and in English

from 2004 to 2014

Lecturer in Statistics

University of Milan

Teaching and Research in Statistics

from 2000 to 2006

Trainer and Consultant

SPSS Italia

Statistical Consulting and Advance Statistical courses with SPSS

EDUCATION AND TRAINING

2003

PhD in Statistics

Dissertation 29/01/2003

University of Milan-Bicocca

Multivariate Statistical Calibration

1999

Bachelor of Statistical Science and Economics

Final mark: 110/110

Catholic University of Milan

Neural Network and Logistic Regression Model

PERSONAL SKILLS

Mother tongue(s)

Italian

Other language(s)

	Understanding		Speaking		Writing
	Listening	Reading	Spoken interaction	Spoken production	
English	B2	B2	B2	B2	B2
France	A2	A2	A2	A2	A2

Levels: A1/A2: Basic user - B1/B2: Independent user - C1/C2: Proficient user
Common European Framework of Reference (CEF) level

Communication skills	Good communication skills gained through my experience as teacher of Statistics and speaker in national and international meetings
Computer skills	Statistical packages (SPSS, STATA, R, MATLAB)
Driving licence	B

TEACHING

Recent Teaching Courses	<ul style="list-style-type: none"> - Statistics, Faculty of Political, Economical and Social Sciences of the University of Milan - Research Methods, Faculty of Political, Economical and Social Sciences of the University of Milan - Statistics and Econometrics, The Faculty of Agricultural and Food Sciences of the University of Milan - Metodi quantitativi per le decisioni aziendali, Faculty of Economics of the Catholic University of Piacenza-Cremona - Statistics for Social Science Data Analysis, Graduate School in Social, Economic and Political Sciences of the University of Milan
-------------------------	--

RESEARCH

Main Publications	<p>L. Torri and S. SALINI. An itinerant sensory approach to investigate consumers' perception and acceptability at a food exhibition. <i>Food Research International</i>, 90:91–99, 2016</p> <p>R. Kenett F. Cugnata and S. SALINI. Bayesian networks in survey data: Robustness and sensitivity issues. <i>Journal of Quality Technology</i>, 2016</p> <p>S. SALINI F. Cugnata, G. Perucca. Bayesian networks and the assessment of universities' value added. <i>Journal of Applied Statistics</i>, pages 1–22, 2016</p> <p>A. Ferrara S. Carrazza and S. SALINI. Research infrastructures in the Ihc era: a scientometric approach. <i>Technological Forecasting and Social Changes</i>, 2016</p> <p>S. SALINI, A. Cerioli, F. Laurini, and M. Riani. Reliable robust regression diagnostics. <i>International Statistical Review</i>, 2015</p> <p>F. Cugnata, R. Kenett, and S. SALINI. Bayesian network applications to customer surveys and infoq. <i>Procedia Economics and Finance</i>, 2015</p> <p>S. SALINI and M. Turri. How to measure institutional diversity in higher education using revenue data. <i>Quality & Quantity</i>, 2015</p> <p>F. De Battisti, A. Ferrara, and S. SALINI. A decade of research in statistics: a topic model approach. <i>Scientometrics</i>, 2015</p> <p>F. Cugnata and S. SALINI. Comparison of alternative imputation methods for ordinal data. <i>Communication In Statistics - Simulation and Computation</i>, 2014</p> <p>F. Cugnata, C. Guglielmetti, and S. SALINI. Model-based approach to validate a measuring instrument for assessing a quality of care. <i>QdS - Journal of Methodological and Applied Statistics</i>, 2014</p> <p>G. Perucca and S. SALINI. Travellers satisfaction with railway transport: A bayesian network approach. <i>Qualitative Technology and Quantitative Management</i>, 2014</p> <p>F. Cugnata and S. SALINI. Model-based approach for importance-performance analysis. <i>Quality & Quantity</i>, 2013</p> <p>M. Florio and S. SALINI. <i>Network Industries and Social Welfare</i>, chapter Quality of Service, chapter 8. Oxford University Press, 2013</p> <p>R. Kenett and S. SALINI, editors. <i>Modern Analysis of Customer Surveys: With Applications Using R</i>. John Wiley & Sons, Ltd, 2012</p> <p>M. Florio, P. Galimberti, and S. SALINI. The search for self-evaluation of knowledge. <i>RIV. Rassegna Italiana di Valutazione</i>, 2012</p> <p>F. Biolcati, A. Ferrara, L. Pinotti, and S. SALINI. Lesson learned by unimival researchers during the comparative bibliometric analysis project (abc). <i>RIV. Rassegna Italiana di Valutazione</i>, 2012</p> <p>F. De Battisti and S. SALINI. Robust analysis of bibliometric data. <i>Statistical Methods and Applications</i>, 2012</p> <p>A. Ferrara and S. SALINI. Ten challenges in modeling bibliographic data for bibliometric analysis. <i>Scientometrics</i>, 2012</p> <p>M. Umbrello, G. Mistraletti, D. Corbella, M. Cigada, S. SALINI, A. Morabito, and G. Iapichino. Bias reduction in repeated-measures observational studies by the use of propensity score: The case of enteral sedation for critically ill patients. <i>Journal of Critical Care</i>, 2012</p>
-------------------	---

- F. De Battisti, G. Nicolini, and S. SALINI. Occupational outcomes according to university ranking. *Journal of Applied Science*, 2011
- P.A. Ferrari and S. SALINI. Complementary use of rasch models and nonlinear principal components analysis in the assessment of the opinion of europeans about utilities. *Journal of Classification*, 2011
- R. S. Kenett and S. SALINI. Modern analysis of customer satisfaction surveys: comparison of models and integrated analysis. *Applied Stochastic Modeld in Business and Industry*, 2011
- S. SALINI. *La valutazione della ricerca e la valutazione della didattica*, chapter La valutazione della ricerca scientifica: analisi bibliometrica comparata delle strutture di ricerca. Vita e Pensiero, MILANO, 2011
- R. Kenett and S. SALINI. *Operational risk management: a practical approach to intelligent data analysis*, chapter Measures of association applied to operational risks. Wiley & sons, 2011
- S. SALINI and Solaro N. *New Perspectives in Statistical Modeling and Data Analysis*, chapter Controlled Calibration in Presence of Clustered Measures. Springer, 2011
- F. De Battisti, G. Nicolini, and S. SALINI. The rasch model in customer satisfaction survey data. *Quality Technology & Quantitative Management*, 2010
- S. Figini, R. S. Kenett, and S. SALINI. Optimal scaling for risk assessment: Merging of operational and financial data. *Quality and Reliability Engineering International*, 2010
- C. Termine, M. Ferri, G. Livetti, E. Beghi, S. SALINI, A. Mongelli, R. Blangiardo, C. Luoni, G. Lanzi, and U. Balottin. Migraine with aura with onset in childhood and adolescence: Long-term natural history and prognostic factors. *Cephalgia*, 2010
- R. Kenett and S. SALINI. New frontiers in survey data analysis. *Quality Progress*, 2009
- A.F. De Vecchi, F. Bamonti-Catena, C. Novembrino, S. Ippolito, G. Guerra, S. Lonati, S. SALINI, C.S. Aman, E. Scurati-Manzoni, and G. Cighetti. Free and total plasma malondialdehyde in chronic renal insufficiency and in dialysis patients. *Nephrology Dialysis Trasplantation*, 2009
- S. SALINI and R. Kenett. Bayesian networks of customer satisfaction survey data. *Journal of Applied Statistics*, 2009
- F. Biolcati Rinaldi, D. Checchi, C. Guglielmetti, S. SALINI, and M. Turri. Ranking e valutazione : il caso delle classifiche delle università. *RIV. Rassegna Italiana di Valutazione*, 2008
- R. Kenett and S. SALINI. Relative linkage disequilibrium application to aircraft accident and operational risk. *Transaction on Machine Learning and Data Mining*, 2008
- U. Balottin, M. Rossi, G. Rossi, L. Vigano, M. Nanti, S. SALINI, G. Lanzi, and C. Termine. The roschach test and gilles de la tourette syndrome: a pilot case control study. *Brain & Development*, 2008
- R. Kenett and S. SALINI. *Advances in data mining: medical applications, E-commerce, marketing, and theoretical aspects: 8th industrial conference, ICDM 2008, Leipzig, Germany, July 16-18 2008, Proceedings*, chapter Relative linkage disequilibrium: a new measure for association rules. Springer, Heidelberg, 2008
- P. Annoni, P. Ferrari, and S. SALINI. *Social and political implications of data mining: knowledge management in E-government*, chapter A data mining approach to advance knowledge in public government : profiling households. IGI Global, HERSHEY, 2008
- G. Vidotto, M. Carone, P.W. Jones, S. SALINI, and G. Bertolotti. Maugeri respiratory failure questionnaire reduced form : a method for improving the questionnaire using the rasch model. *Disability and Rehabilitation*, 2007
- M. Florio, C. V. Fiorio, S. SALINI, and P. A. Ferrari. *Servizi pubblici, nuove tendenze nella regolamentazione, nella produzione e nel finanziamento*, chapter European consumers attitudes on services of general interest: accessibility, price and quality 2000-2004. Franco Angeli, Milano, 2007
- C. Termine, G. Stella, C. Capsoni, E. Rosso, A. Binda, A. Pirola, C. Conti, E. Gruppi, G. Lanzi, S. SALINI, C. Tognatti, M. Zoppello, and U. Balottin. Neuropsychological profile of preschoolers with metaphonological difficulties : results from a non-clinical sample. *Child Care Health and Development*, 2007
- F. De Battisti, S. SALINI, and A. Crescentini. Statistical calibration of psychometric test. *Statistica & Applicazioni*, 2006
- G. Nicolini and S. SALINI. Customer satisfaction in the airline industry: the case of british airways. *Quality and Reliability Engineering International*, 2006
- C. Termine, U. Balottin, G. Rossi, F. Maisano, S. SALINI, R. Di Nardo, and G. Lanzi. Psychopathology in children and adolescents with tourette's syndrome: a controlled study. *Brain & Development*, 2006

P. Annoni, P. A. Ferrari, and S. SALINI. *Advances in data mining: applications in medicine, web mining, marketing, image and signal mining: 6th Industrial Conference on Data Mining, ICDM 2006, Leipzig, Germany, July 14-15, 2006: proceedings*, chapter Data mining analysis on Italian family preferences and expenditures. Springer, Berlino, 2006

S. SALINI. *Data Analysis, Classification and the Forward Search*, chapter Robust Multivariate Calibration. Springer Verlag, BERLINO – DEU, 2006

F. De Battisti, G. Nicolini, and S. SALINI. The rasch model to measure the service quality. *The ICFAI Journal of Service Marketing*, 2005

D. Zappa and S. SALINI. *New Developments in Classification and Data Analysis*, chapter Confidence Regions for Multivariate Calibration: a proposal. Springer, 2005

S. SALINI. *Business Intelligence, CRM E Data Mining*, chapter Tecniche di regressione classificazione. UTET, Torino, 2005

P. Quatto, S. SALINI, and A. Zambon. Techniques of data reduction and neural calculation in observational studies. *Statistica Applicata*, 2002

Research Projects

- Cost/Benefit Analysis in the Research, Development and Innovation Sector - Funded by the European Investment Bank - University Research Sponsorship Programme (EIBURS)
- Lotto 2 'Il sistema universitario italiano: un'analisi regionale' of the Project 'Osservatorio Regionale dei Sistemi di Istruzione e Formazione in Puglia' coordinator Prof. D. Checchi
- FSE - Fondo dote ricerca applicata - Customer Satisfaction analysis in industrial design industry in Lombardy
- PRIN 2010-2011 *MISURA: Multivariate models for risk assessment*, coordinator Prof. P. Giudici (University of Pavia)
- Integrated Action Italy-Spain (HI2008-0069) *Robust Models for the statistical analysis of data with complex structure*, coordinators: Professor Daniel Pena (University Carlos III - Madrid) and Professor Marco Riani (University of Parma)
- Cariplo Foundation project 2009 *The quality of the education system in Lombardy: Measurement, international comparisons and proposals*, coordinator Prof. D. Checchi (University of Milan)
- Sixth Framework Programme (FP6) *Understanding Privatisation Policy: Political Economy and Welfare Effects*, local coordinator Prof. Massimo Florio (University of Milan)
- PRIN 2006 *Metodi per la Valutazione ed il Monitoraggio della soddisfazione dell'utente di Servizi di Pubblica Utilità*, coordinator dal Prof. M. Vichi (University of Sapienza - Roma)
- PRIN 2004 *Modelli Matematici e Statistici di Data Mining con Applicazioni all'e-Government*, coordinator Prof. P. Giudici (University of Pavia)

Research Interests

Statistics for Social Science, Data Mining, Statistical models for Survey data, Scientometrics, Robust Statistics, Philosophy of Statistics

ADDITIONAL INFORMATION

Other Appointments

- from 2012 Member of the Committee of Department of Economics, Management and Quantitative Methods, University of Milan
- from 2010 to 2012 Member of UNIMIVAL (Research group on higher education evaluation of University of Milan Nucleo di Valutazione)
- from 2010 Member of UNIRES (Italian Centre for Research on Universities and Higher Education Systems)
- from 2010 Member of SIS (Italian Statistical Society) Commission *Codice Etico per la Valutazione della Ricerca nelle Scienze Statistiche*
- from 2009 member of the Council of ENBIS (European Network of Business and Industry Statistics)
- from 2009 Member of SIS Commission Open Source
- from 2008 Member of SIS-Magazine Journal Board
- a.a. 2005-2006 Teaching Coordinator *Master in Marketing Intelligence and Data Analysis*, University of Milan
- from 2004 to 2006 Vice Coordinator *Laboratorio di Data Analysis* from Dipartimento di Scienze Economiche Aziendali e Statistiche - University of Milan

Personal interests

Gastronomy, philosophy of science